



*MOVING AHEAD OF TIMES IN ADOPTING TECHNOLOGY.
STAYING WITH TIME TESTED VALUES.*

LOYAL

Cutting Edge Technology | Green Initiatives | Inclusiveness In Practiced Policies

METAMORPHOSIS OF A TEXTILE PIONEER

Loyal Textiles was established in the late 1800's, by Sir ED Sasson, as a spinning and weaving mill with imported machines from England.

Karumuttu Thiagarajar Chettiar, a visionary and doyen of the South Indian textile industry took over the mill in the year 1953. The company transformed into a modern textile mill under his visionary management. Loyal has been steadfast in following its founder's policy of constantly upgrading the technology used and has several firsts to its credit in terms of introducing the latest technology to Indian textile industry.

The year 1979 witnessed the introduction of air jet weaving technology. The first open width continuous dyeing plant was commissioned for knitting in the year 2006 and the first ozone based waste water treatment plant in 2007.

In 1996, Loyal began its international journey by acquiring 'controlling interest' in a Marketing and Logistics company that was involved in design, marketing, warehousing and logistics in Italy for technical garments in workwear segment.

In the area of safety clothing, Loyal is the only Indian company to manufacture a wide range of EN certified garments for high visibility, flame retardant, antistatic flame resistant, acid and chemical resistant garments.

After Loyal came under the Karumuttu fold, it has grown from being a spinning and weaving mill into a fully integrated textile plant from ginning, spinning, weaving, knitting, wet processing of both knits and wovens including special finishes and garmenting to warehousing and logistics.

LOYAL IS A USD 200 MILLION TEXTILE COMPANY

FOUNDERS



Karumuttu Thiagarajan Chettiar



Karumuthu Manickavasagam Chettiar



Manikam Ramaswami

CSR- THE LOYAL PHILOSOPHY

At Loyal we believe that Corporate Social Responsibility is a continuously evolving philosophy.

Following all the laws of the land and being legally compliant is a pre requisite . Going beyond just following the rules of the land when it comes to caring for the environment, not seeking benefits from the government with which we cannot deliver a greater social good than leaving it with the government itself, being morally fair to our stakeholders be it suppliers, employees, customers investors, neighbours, general public, etc.

At Loyal we believe in constantly reviewing our CSR policies and refining them as we become economically more empowered and consequently socially empowered to continuously raise the bar on what we consider right and wrong and go far beyond legal requirements in all spheres.

At Loyal we believe it is our responsibility to share the wealth thus created with our shareholders, employees as well as the society at large in proportion to the profits.

We strongly believe that it is the duty of economically empowered organisations to involve in policy advocacy that reduces the unnecessary transfer of taxpayers money to private enterprises through unwanted subsidies, incentives, etc. In other words, work with a deep sense of responsibility towards the inclusive growth of our nation and our citizens.

At Loyal we believe that it is more important to create wealth without creating distortions to the nation's inclusive growth or by compromising fairness in dealing with stakeholders including the environment than just sharing a small portion of the profits with the society at large.

Environmental policy

At Loyal we have reverential respect for the environment.


At all the manufacturing units, Loyal has both ETP and STP, besides rain water harvesting.

Treated water and water from rain water harvesting are the main sources of water at Loyal's plants.

All units have a very high degree of green cover, harvesting the grass grown in the mill premises, a large number of cows are reared which in turn give bio-fertilizer and bio-pest control solutions besides gas for cooking food for the hostel inmates.

A total of over 75 million litres of rain water storage has been created in the various units of the Loyal group.

Large number of different birds reside in the mill premises; thanks to the large open tanks created for storing rain water and the presence of several fruit bearing trees cultivated specially for the birds to feed upon.



Energy policy

Almost 70% of energy requirements of the mills is met from Loyal's own **Windmills** and **Solar Plants** soon this percentage is set to go up to 90%. We have also planned to set up a 5 MW solar power plant, soon. In order to reduce specific energy consumption several measures are being taken continuously. All our manufacturing units are having only LED and solar lightings systems.

Water treatment and usage at the process house

The dye house is equipped with the most water frugal machines and boasts as one of the lowest specific water consumption per Kg of fabric. The waste water is treated using bio-towers, bio-ponds and finally electro-chemical treatment to remove colours. This is the most non-toxic process that produces insignificant amounts of solids. The caustic soda used is recovered almost fully from the wash water.

Education as an important empowering tool

The founders of Loyal group believed in empowering the society through education.

Loyal group supports several post-graduate educational institutions and schools to provide high quality subsidised education to over 3000 youth.

Loyal encourages continuous education of its employees by providing the necessary support and facilities in the mill hostels. Over 300 employees are currently pursuing undergraduate degree programs even as they work in the mills.

Healthcare support


Currently lifestyle diseases are more threatening than communicable diseases in our state. The cost of treatment for these diseases is probably high and therefore Loyal is following an unique "at your doorstep" preventive health care initiative.

Loyal's healthcare workers visit homes in villages and do on the spot blood pressure and urine checks. If any one of the parameters is out of control then the blood sample is drawn and tested by qualified doctors, again at the door step of the villagers.

Remedial medicine for hypertension and or diabetics is provided at appropriate dosage to the patients at their homes free of cost and regular periodic follow up is also done by qualified doctors again at the door step of the villagers.

By keeping the disease identified under control, it is found that over 70% of renal failure, heart attacks needing intervention and strokes are prevented. The whole process is extremely cost effective.

Loyal's current program covers 40,000 villagers. Loyal is expanding this extremely cost effective, preventive medicare 'at your door step programme' to other villages, hoping to cover a larger number of villagers in future.





LOYAL'S MANUFACTURING FACILITIES



→ GINNING

Loyal has 3 ginning factories with a capacity of 60,000 kgs of lint per day to gin 30 mm plus and extra long staple cotton without contamination. The units follow the best work practices, giving no room for any foreign fibre contamination.



SPINNING ←

Loyal has a total of 135,000 spindles 4,888 rotors and 176 Air Vortex spinning heads. The spinning capacity is spread over four locations (Kovilpatti, Sattur, Arasanur and Naidupet - Andhra Pradesh) Loyal's spinning blocks typically do not exceed 25,000 spindles in one shed to ensure that different blends, are run in different sheds. It has two small 2,000 spindle units to produce technical fibre yarns and special yarns, It has three units with a total capacity of 45,000 spindles to produce PC or CVC yarns, It has two units with a capacity of 24,000 spindles to produce Melange yarns, A dedicated inhouse R&D unit with 2,200 spindles ensures development and on time sampling.



Almost 98% spinning is compact spinning. 9,000 spindles with Siro compact spinning and 3,000 spindles with electronic drafting to produce multi-count/slub yarns.

Majority of the spinning frames have auto doffing and link cone winding configuration. All auto-coners have the latest version of Loepfe clearers with to Zenith provision both polypropylene and colour eliminate contamination.



The carding department being the heart of good spinning, is always kept very young; the average age of the carding department is less than 5 years, with most cards having 3 lickerins.

The open-end spinning has 3 lickerin cards with integrated draw frames and several stages of micro dust removal machines to ensure that open-end yarns are free from moire effect. The latest version of Orelikon Schlafhorst open-end machines have also been installed to meet the flexible requirements of our customers.

The spinning mill produces both open-end (from 6s count up to 24s) and Ring yarns (from 6s count up to 120s) both 100% cotton and polyester blends. Vortex spinning machines has been added to the production-line to produce polyester/cotton knitting yarns with low pilling quality. Loyal also spins technical fibres such as aramid fibres, carbon fibres and other inherently flame resistant fibres in several blends.

Besides using Indian cotton, the company uses imported cotton from Egypt, Supima from USA, Pima from Israel / USA and also BCI organic cotton. The cotton is checked before feeding in to the cards through the camera based contamination and polypropylene eliminators installed at two locations in the blow room line Manual contamination cleaning rooms with UV inspection also have been set up in all mills.

THE ANNUAL PRODUCTION OF YARN IS MORE THAN 30,000 TONS, WHICH INCLUDES THE FOLLOWING:

Ring spun : (Organic BCI, Bamboo, Giza, Pima) 100%, cotton, polyester blends, viscose blends, Modal, Micro Modal, Tencel blends, linen blends and lycra blends

Open end : 100% cotton, polyester blends

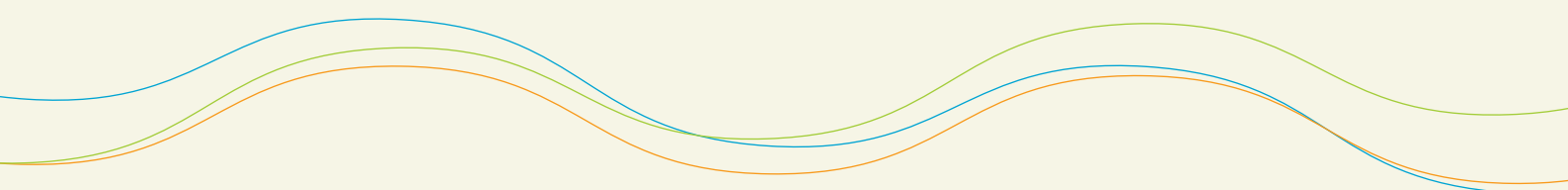
Speciality yarn : Multi fibre blend, Multi count, Multi twist and slub Yarn, Neppy Yarn, Siro compact yarn, Snow yarn, Linen blends, Technical yarn, Recycled Polyester blended Yarn.

Melange yarn

Organic cotton yarn, BCI cotton yarn & Blends, E - Melange

Carbon yarn, metal yarn and other anti static yarn

Aramid and other inherently flame resistant fibre blended yarn





WIND/SOLAR ENERGY

Loyal produces over 70% of its consumed energy through wind mills. 90% wind energy generation is the corporate goal.

Loyal has 2.34 MW of Solar power



→ TWISTING & GASSING UNIT

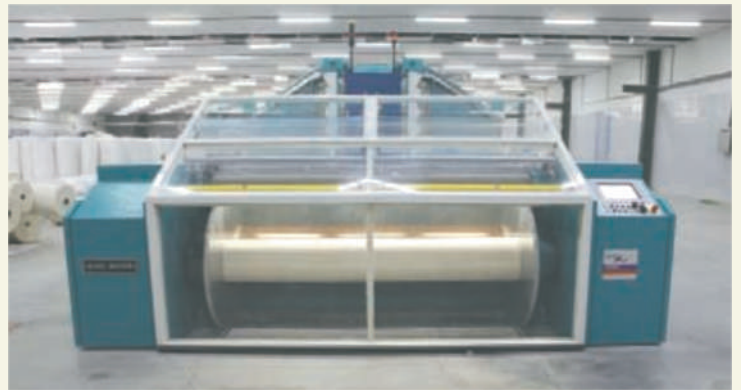
Loyal's Twisting unit at Sattur houses Murata and Peas Metler parallel winding machines, 22 TFO machines, 160 drums RITE gassing machines and 720 drum winding machines. The unit is also equipped with Xorella Yarn conditioning machines to condition hosiery yarn and folded yarn from 2/10s to 2/140s. The company also has 240 gassing positions to produce gassed yarns for the global market.

REPROCESSING OF WASTES

Loyal has a yarn opening line to convert waste yarns into useable fibre. Loyal has a opening line which includes fabric shredding and opening to convert fabric into fibre. The company has a full-fledged waste cleaning line which carries out several stages of micro dust extraction to reprocess the waste and make it suitable for use in open-end machines.

100% of the waste produced in the ring yarn line is reprocessed, only the waste produced in the open-end line is sold.





→ WEAVING

The weaving preparatory consists of Benninger (Karl Mayer) warping and sizing machines with 5 warping machines, 2 sectional warping machine and 4 sizing machines, with size pick-up measuring and control device.

Loyal has wide width air jet looms, narrow width air jet looms and wide width looms with dobbies and twin beams. The Air jet looms are from Toyota, Picanol, and Mythos Somet.

The two weaving mills of the company have 460 air jet looms of widths 190 cms, 210 cms, 220 cms, 280 cms, 340 cms and 360 cms. Crank, cam and dobby looms with single and double beam options with up to 6 weft feeders are also available.

Loyal employs the most energy efficient centrifugal compressors and use coated aluminum tubes to reduce flow resistance. Air consumption is monitored online to ensure that all looms use minimum amount of air. The loom sphere humidification system reduces power and water consumption.

The company weaves from 6s to 100s count both single and ply yarns in plain, drill, sateen and dobby weaves and 100% cotton, Viscose, Modal, Micro modal, lycra core spun, Multi component ELASTRAL yarn (T400) slub, polyester blends and filament yarns to produce a very wide range of fabrics for virtually any application.

The company produces 170,000 - 200,000 metres of fabrics per day of width from 129 cms to 360 cms of count range from 6s to 100s including very densely woven fabrics.



UNCOMPROMISING OBSESSION FOR QUALITY

Loyal has a full fledged R& D UNIT which is having Blow room to spinning, weaving preparatory, electronically adjustable loom and knitting machine. The R&D unit is approved by Govt of India and developed lot of new products.

Quality assurance is carefully imbibed in every process and is every employee's obsession. It begins at the ginnery. Loyal's cotton selectors choose the gins from where Loyal buys its cotton. The cotton is thoroughly tested using HVI instruments and issued for mixing, using a bale management system which ensures a narrow band of average yellowness and micronaire values. Other instruments in the lab are AFIS, Premier iQ2 LX yarn and preparatory slivers and roving evenness tester, Uster Classimat and Tensorapid strength tester from Premier. Loyal uses a combination of cottons from West African, Egypt, USA, Israel and India to produce yarns for different customer specifications. 100% of both knit and woven cloths grey, as well as dyed are inspected before packing.

Fully equipped quality control labs:

1. **High volume cotton testing** to ensure that every bale is tested. Loyal's own bale management system is followed while mixing the different bales
2. **AFIS advanced fibre information system** is used to get a clearer picture of the cotton and process slivers
3. **Mesdon:** For online measurement of neps at carding and combers at all units
4. **Yarn and sliver quality testing machines** including fabric simulator with a software to identify the source of defect
5. **Tensorapid:** Single yarn strength testers to determine the RKM
6. **Classimat:** Loyal is having Class iQON, an advanced yarn fault detection and classification instrument. Using a combination of Visible Light and Infrared technology, the machine detects fibre mass variations, splice faults and foreign fibre contamination, including white polypropylene. Both cleared and uncleared yarn are tested regularly to identify the faults and based on the test results the process parameters and clearer settings are optimised to get the best quality.

Loyal does not stop quality assurance drive with mere quantitative readings. The yarn produced at Loyal is actually knitted/ woven into fabrics and also dyed to assess the various aspects of the yarn to assess its full capability before the quality is approved.



The image shows a two-story building with a red-tiled roof and white walls. A large, leafy tree is in the foreground, partially obscuring the building. A paved area with a low white curb is in front of the building. A person is walking on the path. The foreground is a grassy area with some fallen leaves.

THE GREEN BELT

Present green cover is spread over 110 acres and housing over 8,000 trees. Efforts are taken to keep adding acreage to the green cover.



→ COMPREHENSIVE KNITTING CAPABILITIES

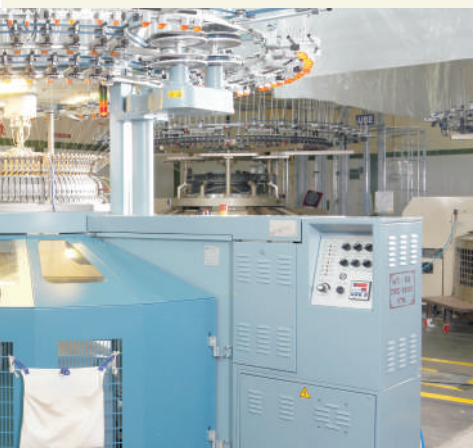
Loyal's knitting plant has capacity to produce 120 tons of knit fabrics a day in Single Jersey, Interlock, Ribs, 3 thread Fleece terry and Pique Polo Knits

The Plant is equipped with knitting machines of diameter from 20" to 36" and gauges from 20 GG to 44 GG from Mayer and Cie, Terrot, Pailung, Unitex, Amtex, Pilotelli, Stoll machines, Lafer Brushing Machine & Heatset greystretch knit Fabric machine

The company has a huge capacity of open-width knitting machines to produce cotton spandex fabrics. All machines have high-legs to produce 100 kilo plus rolls with scanners to monitor the quality online; they also have the latest creel that can accommodate up to 4 kilo package and with individual air jet nozzlesto feed yarn to the feeder

Flat knitting machines are used to produce collars and cuffs. The knitting capacity is 2,250 tons per month. All yarns used in knitting are Xorella conditioned waxed yarns cleared using color and PP contamination clearers.





Loyal knits are cotton combed, carded, compact, siro compact, slubs, polyester blends and filament interlaced fabrics of wide range weight from 60 GSM to 450 GSM.

Loyal takes pride in having one of the best knitting facilities in the world in terms of quality of knitting, culture of needle and sinker change, labour productivity and power consumption.

INTELLIGENT KNIT INSPECTION SYSTEM



Loyal does 100% inspection of the knit fabrics with Intelligent Inspection Machines. Using in-house software, the machines capture all the data on defects, contamination and grade the fabrics to ensure 100% customers delight. Once inspected and rolls cut to stipulated weight, they are automatically packed and made ready for dispatch. The 'Seven gate quality assurance system' provides a strong platform for zero defect.

The fabric rolls are stored in Rack supported warehouse, with full automation.

→ DYE HOUSE

The dye house has two sections: The woven fabric dyeing section and the knit dyeing section.

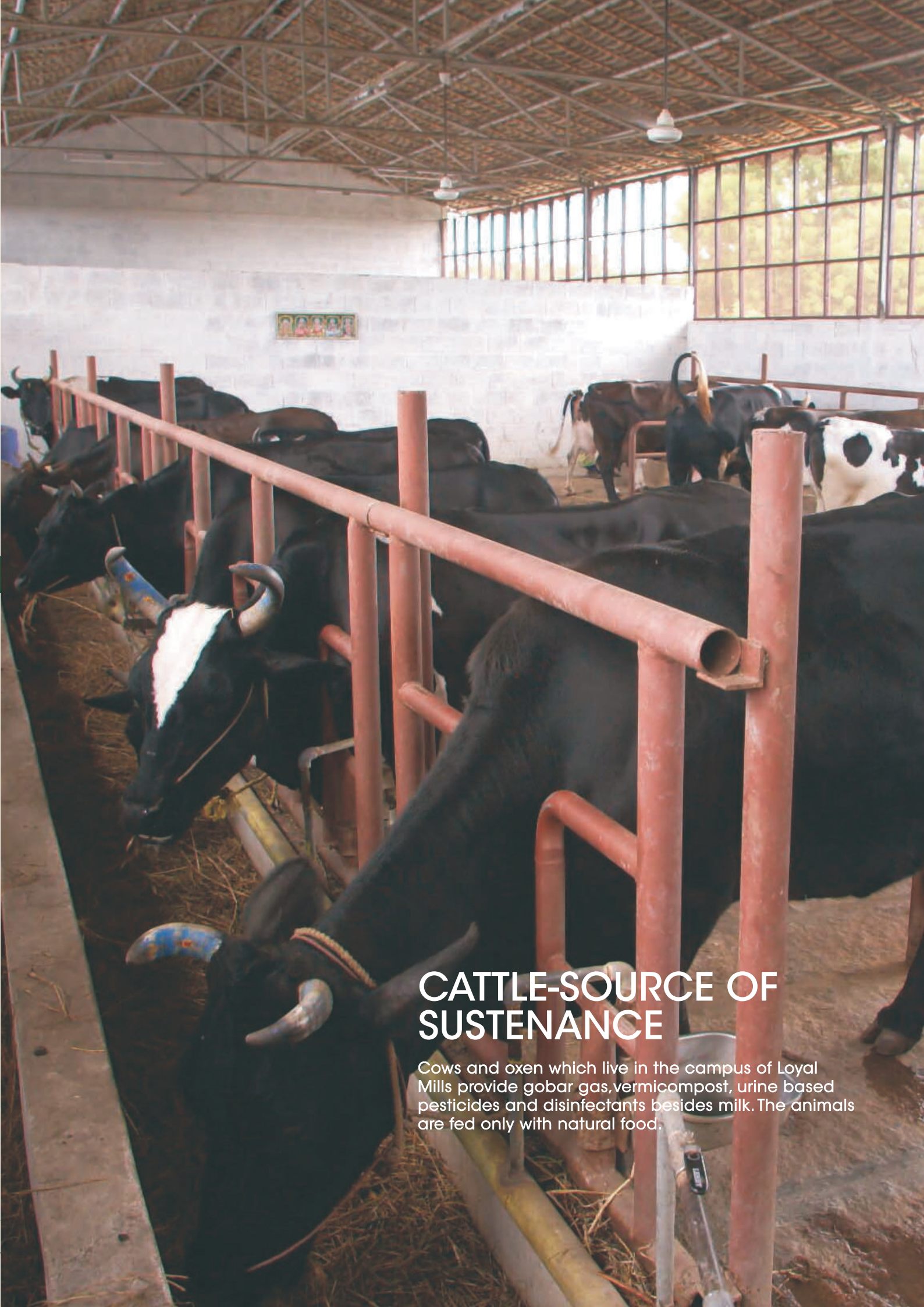
The woven fabric dyeing section consists of Osthoff gassing, Kuster's continuous bleaching range, Kuster's mercerising machine, Monfort E-Control dyeing machine, Kuster's continuous washing range, Brucker Stenters with coating attachments, Ceramic, Aluminium wire brushing, steel wire raising machines and a Sanforising machine.

The knit dyeing section consists of Erbatech continuous bleaching, Monfort relax dryer, Benninger padder, Erbatech washing machine, Bruckner stenter compacting machine and Soft flow machines from Scalvos for exhaust & polyester blends dyeing.

The lab consists of

- ★ Barco siedo colour master from Tree Point
- ★ Konica Minolta Spectrophotometer 3600 d
- ★ Mathis E-control, Lab stenter
- ★ Exhaust dyeing machines
- ★ Washing machines & Tumble dryers
- ★ Atlas flame retardant tester





CATTLE-SOURCE OF SUSTENANCE

Cows and oxen which live in the campus of Loyal Mills provide gobar gas, vermicompost, urine based pesticides and disinfectants besides milk. The animals are fed only with natural food.



GARMENTS UNITS



Garments division has Gerber and Morgan automatic spreading and cutting machines Juki Brother and special purpose machines including automatic pocket setters, welt pocket makers, profile stitching machines, collar making and stitching machines, belt loop attaching machines, etc. We are specialized in all kind of work wear and safety wear which will pass EU/US/AUS/NZ . We make T shirts, Polo's, night wears, pyjamas, Leggings ,under garments catering to men's / women's/kids



All machines have underbed trimmers and a computer stitch control. 10,000 complex garments with multiple pockets and design features can be made per day. Besides this, Loyal produces 3.5 million pieces of knitted garments per annum.





VERMICULTURE

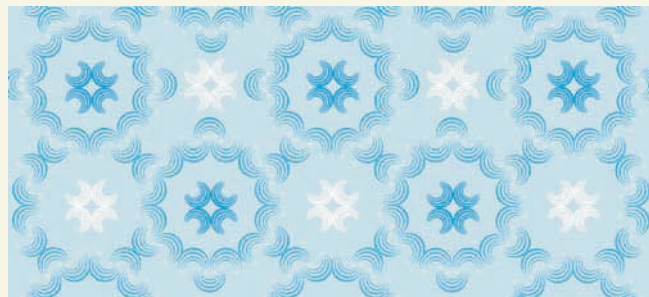
Using two kinds of well known species of Earthworm (*Eisenia Fetida* and *Eudref is eugina*) vermicompose preparation is made through trench method. By this, Loyal improves microbial population and nitrogen fixing.

→ ORGANIC TEXTILES

Loyal strongly believes in the organic way of cotton cultivation and in eco-friendly ways of converting the raw material into finished product for better sustainable ways of production.

Loyal is certified by "Control Union World Group" (formerly known as SKAL International) to supply organic products with traceability under GOTS.

All the units - spinning, weaving, knitting, dyeing & finishing and garmenting are GOTS certified for processing organic cotton.



STATE-OF-ART WAREHOUSING ←

Loyal employs computer assisted warehousing with automatic loading and unloading machine and also employs manual machine. Everything has a clearly demarcated space and stored accordingly. This ensures absolute precision in handling a wide range of items.





Thiagarajar College of Preceptors



Thiagarajar Model Higher Secondary School

CORPORATE SOCIAL RESPONSIBILITY INITIATIVES

Loyal Textile Mills Group supports charitable trusts and several educational institutions offering quality education from primary level to master's level in Business Management. Around 3,000 students receive a highly subsidised education through these trusts every year.



Thiagarajar School of Management, Madurai.



→ GLOBAL RECOGNITION AND CERTIFICATIONS

Loyal Group's production units are certified by various international organisations for its quality management practices, environmental management and safety related measures.

- ★ Four Star Export House recognized by GOVERNMENT OF INDIA
- ★ Loyal Textile Mills is the first vertically integrated textile mill to get a certification in Asia for Integrated Management System (IMS) covering ISO : 9001 : 2015 (Quality System) ISO : 14001 : 2015 (Environmental Management System) ISO : 45000 : 2018 (Safety Management System)
- ★ SA 8000: 2014
- ★ WRAP - Worldwide Responsible Accredited Production Platinum certified
- ★ Green Building (Corporate office) under IGBC certification
- ★ Global Organic Textile Standards (GOTS) - cotton/yarn/dyed fabrics/garments / accessories
- ★ Better Cotton Initiative (BCI)
- ★ Global Recycled Standard (GRS)
- ★ In House Research and Development unit recognized by Department of Scientific and Industrial Research (DSIR), Government of India ,
- ★ Patented process for High Tear Strength Flame Resistant Cotton Fabric.

STANDARD

- ★ OEKO Tex certification - cotton/yarn/dyed fabric STANDARD 100
- ★ Bardush standards for European industrial wash
- ★ BS 2576/1986 & ASTM D1424/1996 standards for fabrics
- ★ ASTM D5034 / ASTM d1424 standards for dyed fabrics
- ★ ISO 13934/ISO 4074-2 dyed fabrics for purpose of garmenting
- ★ EN 20471, EN 14116, EN 11611, EN 11612, EN 61482-1-2, EN 1149, EN 13034, EN 469, EN 15614, NFPA 2112, NFPA 70 E, ASTM 1506, ASTM 1959 Standards for protective garments.





ENVIRONMENTAL MANAGEMENT SYSTEM (ISO 14001)

Complying with applicable environmental legislations, and going beyond for the betterment of the environment.

- ★ Conserving natural resources through responsible management of energy and water use
- ★ Dyeing of fabrics using water frugal technology and E- control dyeing
- ★ Waste water C.O.D and B.O.D reduced to acceptable levels using a combination of bio-tower and aeration tank
- ★ Reducing environmental impacts through reuse, recycle and minimisation of waste
- ★ Adopting cost effective measures in the prevention of pollution from our processes
- ★ Motivating and preparing all employees to take personal accountability for protecting the environment
- ★ Planning, implementing and reviewing environmental objectives & targets for continuous improvements
- ★ Regularly reviewing and improving our environmental management system



WASTE WATER TREATMENT

Waste water produced in the dye house is one of the lowest levels in the industry per kilo of fabric processed. This water is treated using bacteria and electro chlorination process to produce the least amount of sludge.



PRODUCTS

→ YARN

- ★ Ring yarn and Open-end yarn in counts 6s to 120s
- ★ Carded • Combed • Compact
- ★ Tri blend • Multi count • Multi twist • slub • Snow • Siro Compact
- ★ Melange : 100% cotton, 100% Viscose, 100% Modal, 100% Micro Modal, 100 % Polyester, Cotton Viscose, Cotton Polyester, E.Melange
- ★ 100 % Recycled Cotton, Polyester blend
- ★ Speciality yarn : Carbon / Metal / other Anti static • Aramid and other inherently flame resistant fibre blends
- ★ Gassed • TFO yarn from 10/2 to 120/2



→ WOVEN FABRICS

- ★ Airjet looms. Width 50 inches to 140 inches
- ★ Plain • Twills & Drills • Duck • Canvas • Sateen • Dobby • Double Cloth



→ KNITTED FABRICS

- ★ Machine Diameter 20 inches to 36 inches
- ★ From 20 to 44 Gauge
- ★ Single Jersey. Inter lock • Pique • 1 x 1 Rib • 2x 1 Rib • Fleece • Terry • All types of needle drop • Collar and cuff
- ★ Open width / tubular single jersey with all feed lycra
- ★ Open width white and dyed , compacted fabric from 55 inches to 78 inches width

100% cotton (BCI, ORGANIC , BAMBOO, GIZA,PIMA), Polyester Blends, Viscose, Modal, Micro Modal ,Tencel and Blends , Linen Blends and Lycra Blends can be offered in Yarn, Fabrics and Garments





CORPORATE SOCIAL RESPONSIBILITY INITIATIVES

Conscious of its obligations to the society, Loyal has taken the initiative to create health awareness by providing health screen for 25,000 people living in villages, around its factories. This helps in identifying hypertension and diabetics and provide treatment at their doorsteps.



PROCESSED WOVEN AND KNITTED FABRICS



- 35000 meters of processed woven fabrics per day in width of 50 inches to 63 inches
- 10 tones of processed knitted fabrics per day in the width of 55 inches to 78 inches (open width only)
- 100% cotton • 100% viscose
• 100% Polyester • 100% Modal blends • Polyester blends
- Vat/Reactive/Dispense/ High Visibility
- Pre shrunk /Compact
- Peached • Brushed • Flame Retardant • Acid Resistant
• Anti Bacterial • Stain Guard
• Moisture Management
• Resin • Enzyme • Coated Textiles



STATION PRINTING

**PRODUCTION CAPACITY:
20,000 STRIKES PER DAY**

UPTO 12 COLOURS PER PRINT

- REACTIVE
- PIGMENT
- PLASTISOL
- FOAM



A photograph of a forest scene. In the foreground, a path covered in fallen leaves leads towards a rustic wooden fence made of vertical posts and a horizontal log. The background is filled with tall, slender trees and dense green foliage, with sunlight filtering through the leaves.

CARBON EMISSION

Loyal is working towards becoming a net Carbondioxide consumer and not an emitter.

Loyal's energy requirements are being increasingly met by it's own wind farms. Loyal's fire wood requirements too are being increasingly met from its own captive firewood plantations.

Loyal's corporate office has followed all the recommendations of the Green Building code.

→ WOVEN GARMENTS



KNITTED GARMENTS



→ SHOPPING BAGS

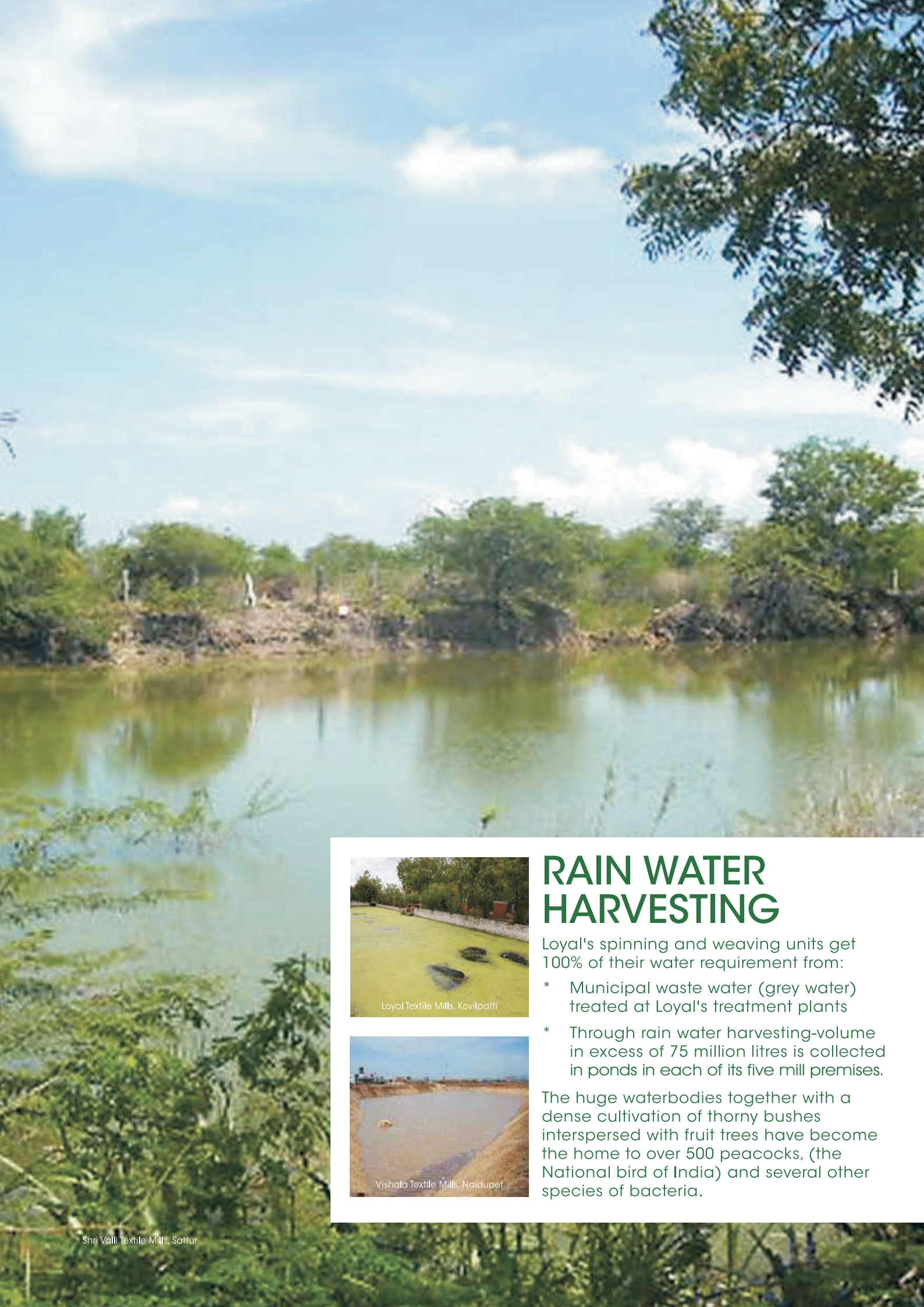




CORPORATE SOCIAL RESPONSIBILITY INITIATIVES

As a part of providing an opportunity for young women workforce to improve their living standards and future prospects, graduate degree classes are being conducted to lead them to secure a university degree through distance education programmes.





RAIN WATER HARVESTING

Loyal's spinning and weaving units get 100% of their water requirement from:

- * Municipal waste water (grey water) treated at Loyal's treatment plants
- * Through rain water harvesting-volume in excess of 75 million litres is collected in ponds in each of its five mill premises.

The huge waterbodies together with a dense cultivation of thorny bushes interspersed with fruit trees have become the home to over 500 peacocks, (the National bird of India) and several other species of bacteria.



Loyal Textile Mills, Kovilpatti



Vishala Textile Mills, Naidupet



COMMERCIAL PERFORMANCE

Loyal ended the financial year 2018-19 with a turnover of US\$ 200 million

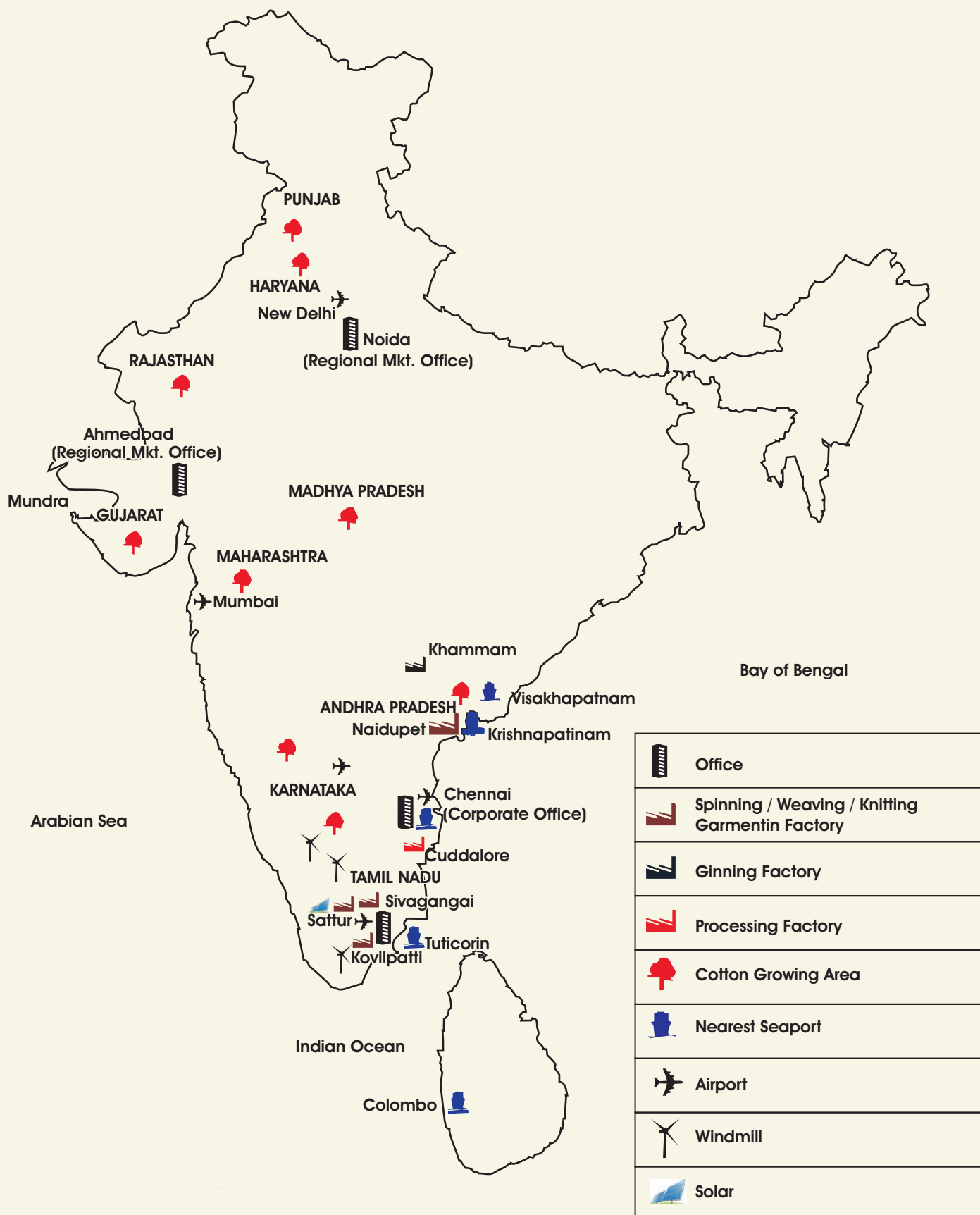
Export of textiles amounted to US\$ 175million

GruppoP&P Loyal SPA, Italy had a turnover of€6 million in 2018

	NAME	DESIGNATION	EMAL	PHONE
	Valli M Ramaswami	Chairperson	director@loyaltextiles.com	+91 4442277366
	A Velliangiri	Chief Executive Officer	ceo@loyaltextiles.com	+91 8110041600
	D Devadas	Chief Technical Officer	devadas@loyaltextiles.com	+91 7094446585
Yarn & Fabrics Exports	KL Palaniappan	President	klp@loyaltextiles.com	+914442277357 +979840050816
	C Chellappa	Vice President (Marketing)	cc@loyaltextiles.com	+914442277346 +91 9585829989
	K Lakshmana Sankar	General Manager (Sales)	kls@loyaltextiles.com	+919487880101
	S Palaniappan	Manager (Marketing)	palani@loyaltextiles.com	+91 7094456565
	N Kirubakaran	Manager (Marketing)	kirubakaran@loyaltextiles.com	+91 9894296446
Garments	P Manivannan	Vice President Garments	manivannan@loyaltextiles.com	+91 9840092972
Technical Garments	D Manohar	General Manager (Technical Textiles & Garments)	manohar@loyaltextiles.com	+91 4442277349 +91 9442101610
Commercial, Legal & Operations	M E Manivannan	Senior Vice President (Operations)	mem@loyaltextiles.com	+91 4442277347 +919500031441
Compliance & Certification	M Ramakrishnan	Senior Vice President (Human Resources)	ramakrishnan@loyaltextiles.com	+91 4442277369 +91 9446072437

Overseas office for Technical Garments

Gruppo P&P Loyal SPA Italy	Valerio Cagnoli	Technical Director	valerio@peployal.it	+390187523546 +393357706722
	Luca Cardillo	Sales Director	luce@peployal.it	+390187523546 +393357706724



CORPORATE OFFICE

Loyal Textile Mills Ltd.
No.83/41, First Main Road,
R.A.Puram, Chennai - 600 028. India
Ph: 00 91 44 4227 7374.
Fax No: 00 91 44 4306 0622
www.loyaltextiles.com