

THE RIGHT PERSONAL SAFETY EQUIPMENT

**PROTECTING  
PEOPLE  
WHO**

**PROTECT**

**US**



**PERSONAL  
PROTECTION  
EQUIPMENT KITS**

By Loyal Textile  
Mills Ltd.



**SUPERA<sup>TM</sup>  
SHIELD**

# THE RIGHT PERSONAL SAFETY EQUIPMENT

Supera Shield™ medical personal protection equipment kits are carefully engineered products to assure 100% protection to frontline Doctors and healthcare givers who are risking their own precious lives to save the COVID Patients

## KIT INCLUDES



**1. Coverall**



**2. Gown**



**3. Head cover**



**4. Face shield**



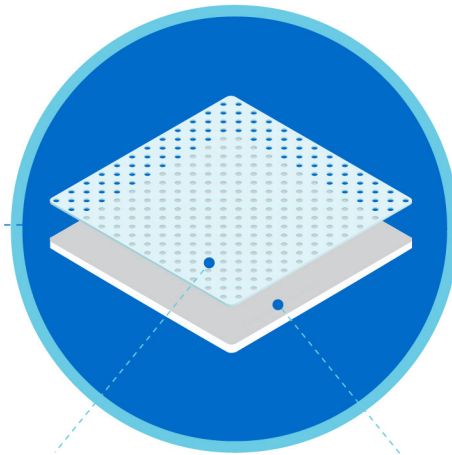
**5. Shoe cover**



**6. Nitrile gloves**

These equipments have been carefully designed & engineered by R&D Centre-Loyal Textiles Mills, IIT-Delhi, World University of Design-Delhi and Panel of Doctors in Chennai & Delhi. Field trials conducted by Doctors in Delhi, Chennai & Kovilpatti.

# SUPERA SHIELD™ MEDICAL PPE KIT ADVANTAGES

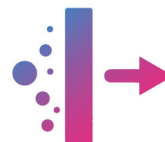


**NW PP SSMMS  
with PU Lamination  
90 gsm / NW PP SB  
PU laminated 70 gsm**

**PU  
LAMINATION**



**NW PP SSMMS  
with PU Lamination  
90 gsm / NW PP SB  
PU laminated 70 gsm**



**Fabric tested for Synthetic  
Blood & Body Fluid Penetration  
Resistance (ASTM F 1670/F).  
Seam sealing tested for  
ASTM 1670M-08(2014)**



**Bacterial Filtration  
Efficiency of 99 % +  
(ASTM F 2101)**



**Complete compliance  
with the guidelines  
for COVID PPE Kits**



# SUPERA SHIELD™ MEDICAL PPE KIT HIGHLIGHTS



All the Seams have been sealed by heat sealing tapes and the seams have also been tested by SITRA (National Centre of Excellence for Medical Textiles) (ASTM F 1670M – 08 (2014)) and passed for synthetic blood & body fluid penetration resistance



The design of the garments are very scientific for quick donning and doffing without the help of an assistant and the design provides safe doffing of contaminated garments without any need to touch the inner garments and other parts of the body



UNIQUE code number given by SITRA (National Centre of Excellence for Medical Textiles) for these certifications are printed with indelible ink inside each garment and every garment has UCC & traceability label with decoding and mapping complete traceability up to fabric



The large hood covers the entire head, forehead and face with face mask and face shield (CE certified)



The design ensures as little seams as possible, with a zipper up to the chin and with a full-length zip flap closure offering additional protection



Special thumb loops have been carefully provided for both the sleeves of the coverall & gowns so that the sleeves will be locked in position and will not slip down exposing the upper arms of the wearer



Breathability: WVTR (Water Vapor Transmission Rate) is 600-800 gms per GSM in 24 Hrs. High breathability version available on request

## UCC & TRACEABILITY LABEL

Product	Coverall
Manufacturer	Loyal Textile Mills Ltd.
SITRA. UCC	S-NW-CA200427P1552-A3B1
Test Standard	ASTM F1670/F1670M-08(2014)
Date of Mfd	24-04-2020
Batch No.	1510213828/251-200016



Approved by Centre of Excellence in Medical Textiles, South India Textile Research Association & DRDO HVF - Avadi, the two Labs authorized by Government of India to test and approve PPEs for the fight against COVID. These garments meet with all the compliances mandated by Government of India for COVID PPE kits


# SUPERA SHIELD™ MEDICAL PPE KITS



The advantage of the face shield over the goggles is that the wearer is free to use his own spectacle for clear vision and reading. The transparent PE shield saves the face with full protection all around the face and at the same time allowing clear vision.

## Reusable/Autoclavable PPE Kit



Reusable, Autoclavable PPE kits are made of 105 gsm Inherent anti-microbial feel fresh polyester cotton woven fabric (Co-branded with ) with PU Lamination which have been tested for 10 washes and autoclaving cycles. These are also SITRA (National Centre of Excellence for Medical Textiles) tested and certified.

# SUPERA SHIELD™

## STAND-OUT FEATURES



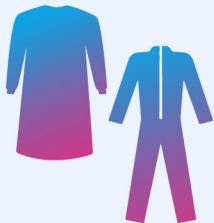
Supera Shield™ reusable PPE Kits are made out of viral barrier PU Lamination assuring 100% protection against COVID virus.



Supera Shield™ gown design does not need third person assistance during donning and doffing. The wearer himself /herself can do the donning and doffing easily



Our wrap around gown design with over-lap and side knot assists the Doctors during doffing, so that their fingers need not touch their inner garments and other body parts



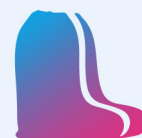
For Doctors facing patients, front opening is not advised. But in a coverall front opening with a zip is unavoidable. Hence Supera Shield™ offers additional protection with the gown worn over the coverall or specially designed coverall with zip flap and double side tape for full protection



We have taken similar care in designing the Head Cover which protects the neck at the back, front and sides. We have designed in such a way that this can protect even for second line Doctors without a coverall but with combination of gown. Also our head cover almost covers the full fore head up to eye brows, neck and shoulder.



We strongly recommend Face Shield developed by IIT-M instead of goggles which reduces the strain on the eyes for the Doctors. Also helps Doctors wearing spectacles



Our shoe covers are carefully designed to protect up to knees

# BENCHMARKING THE MEDICAL PPE KITS



25 years of excellence in  
Technical Garments, Fire Retardent,  
Safety, Medical and Health

SITRA (National Centre of Excellence for Medical Textiles)  
/ DRDO / MOT / MOH / GOI approved  
fabric manufacturer for PPE. Basic fabrics tested and  
passed by SITRA, DRDO, BioTech Testing / Garments tested  
for CA, G, HC, SC and passed by SITRA / DRDO



Satisfies BMC (Brihan Mumbai Corporation)  
guidelines for PPE (Supera Shield™ uses a  
minimum of a 70 gsm in all fabrics)

All Styling and Sizes optimized for  
Indian Body Anthropometric  
measurements



Ease of donning and doffing with minimal touch  
of inner garments and other body parts

[Click here for Supera Shield™ PPE kit donning and doffing video](#)

Loyal's R&D team created 6 designs. IIT Delhi shortlisted 2 designs.

Panel of Doctors in Delhi & Chennai selected the final design.

Professional design assistance by  WORLD UNIVERSITY OF DESIGN, Delhi.

Field trials conducted by Doctors in Delhi, Chennai & Kovilpatti







**SUPERA<sup>TM</sup>  
SHIELD**

---

**Corporate Office:** 83 (41), 1st Main Road,  
R.A. Puram, Chennai - 600 028, Tamil Nadu, India

**Manufacturing:** Loyal Textile Mills Ltd, 21/4, Mill Street,  
Kovilpatti - 628 501, Tamil Nadu, India

**☎ For enquiries please call:**

98429 35656, 82206 89902, 95131 29501, 72595 51695  
98919 03552, 98942 96446, 70941 10055, 94883 01975

**✉ Email: [mask@loyaltextiles.com](mailto:mask@loyaltextiles.com)**

**🌐 Website: [www.loyaltextiles.com/superashield](http://www.loyaltextiles.com/superashield)**

## ***From the House of Loyal Textile Mills Limited***

Loyal Textile Mills with a Heritage of over 100 years of continuous operations in textile industry and with over 23 years of experience in technical garments, health and medical textiles designed and manufactured so far about 2 million reusable wash and wear masks in various designs like knit spandex anti-bacterial, SS 72, SS 96 & SS 95 to serve the humanity in a short period of just 36 days. Realizing the need to protect the protectors - the Doctors and health care Givers, the company's R&D Engineers designed medical personal protection equipment kits in association with Panel of Doctors in Delhi & Chennai, IIT-Delhi and World University of Design, Delhi.